

# MONTHLY MEMBERSHIP PROGRESS REPORT

LOCATION REP OF BANGLADESH

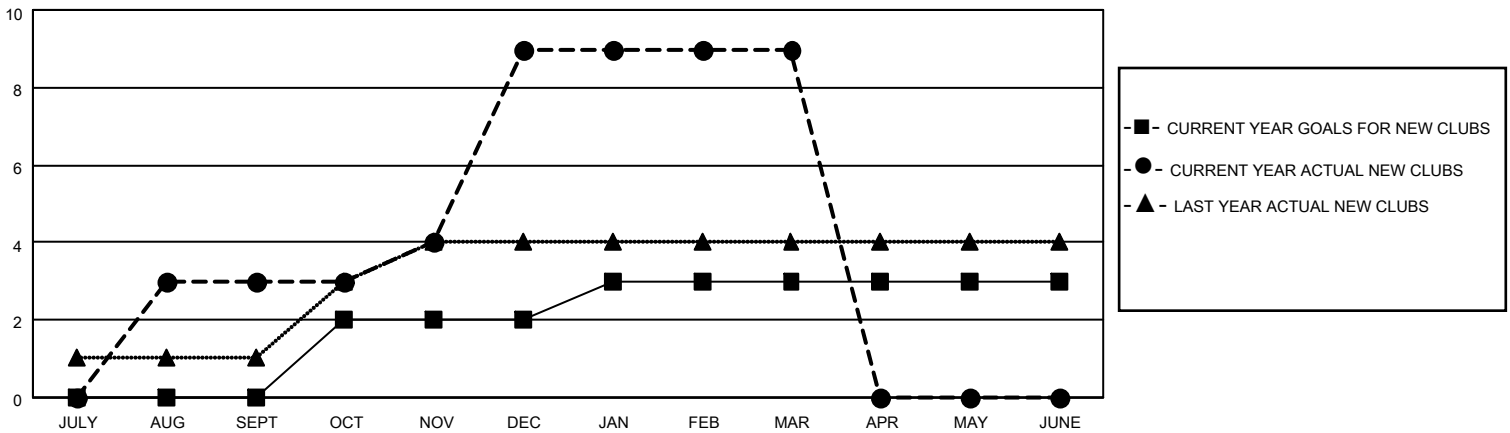
District 315B4

Results as of: 3/31/2021

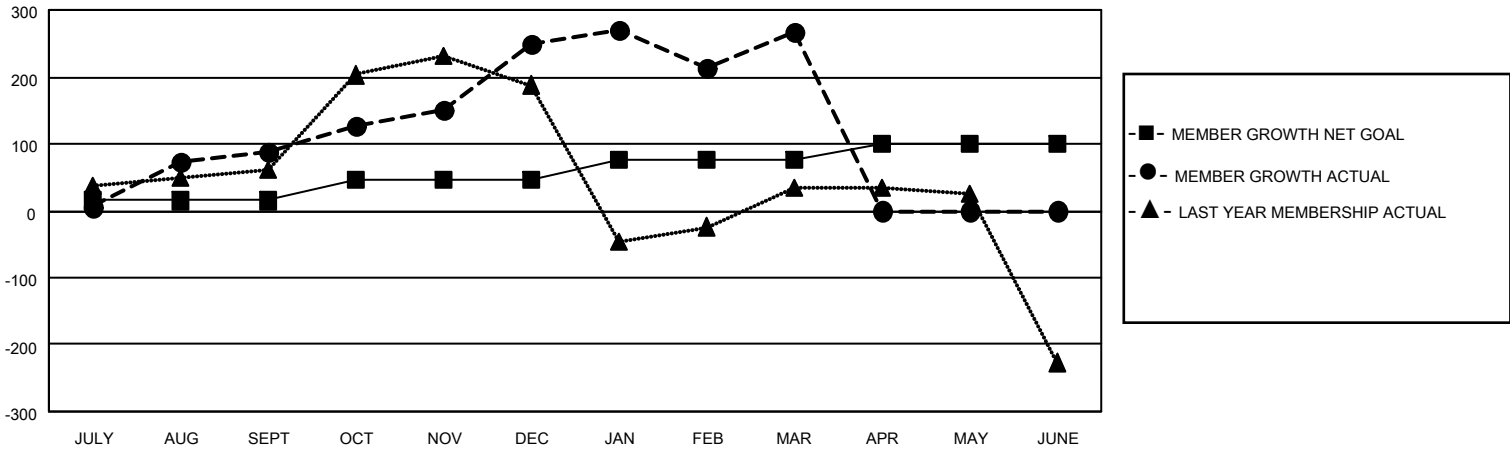
Clubs			
RESULTS FOR 2020-2021			
QUARTER	NEW CLUB GOAL	NEW CLUBS	DROPPED CLUBS
JULY/AUG/SEPT	0	3	0
OCT/NOV/DEC	2	6	0
JAN/FEB/MAR	1	0	4
APR/MAY/JUNE	0	0	0

Members			
RESULTS FOR 2020-2021			
QUARTER	MEMBER GROWTH NET GOAL	MEMBER GROWTH ACTUAL	DROPPED MEMBERS ACTUAL (including transfers)
JULY/AUG/SEPT	15	113	24
OCT/NOV/DEC	30	294	128
JAN/FEB/MAR	30	117	94
APR/MAY/JUNE	25	0	0

**GOALS AND ACTUAL NEW CLUBS CUMULATIVE**



**GOALS AND ACTUAL MEMBERS CUMULATIVE**



**DROPPED CLUBS: 4**

**57 CLUBS OF 89 ADDED 1 OR MORE NEW MEMBERS**

**GENDER DISTRIBUTION**

MALE            2,274 (81.07%)  
 FEMALE        531 (18.93%)

**DROPPED MEMBERS**

[CLICK HERE FOR CUMULATIVE MEMBERSHIP DATA](#)

DECEASED	7
CLUB CANCELLED	76
OTHER	163
<b>TOTAL</b>	<b>246</b>

TOTAL FAMILY UNIT MEMBERS	1,053
FAMILY MEMBERS PAYING HALF DUES	709